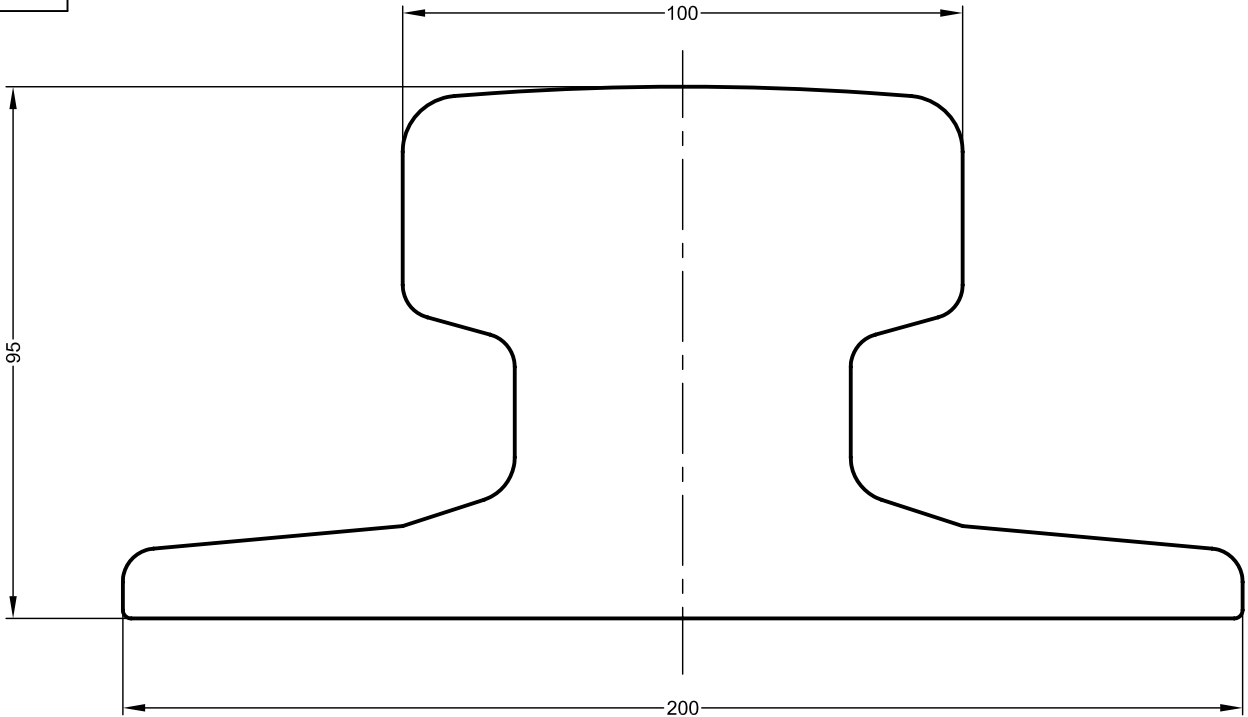
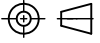


THIRD ANGLE PROJECTION



**GANTRAIL<sup>®</sup>**

Rail Mounting Systems

THE TECHNICAL DATA CONTAINED IN THIS DRAWING IS THE PROPERTY OF GANTRY RAILING LIMITED AND IS SUBJECT TO COPYRIGHT ©

**Gantry Railing Limited**  
 SUDMEADOW ROAD, HEMPSTED  
 GLOUCESTER GL2 5HG, ENGLAND  
 Tel: (01452)300688 Fax: (01452)300198  
 International Dialling # 44.1452  
<http://www.gantry.co.uk>  
 E-Mail: [Info@gantry.co.uk](mailto:Info@gantry.co.uk)

Rail Designation	A100
Rail Origin	GERMANY
Standard	DIN 536
Area of section	9506 mm <sup>2</sup>
Calculated Mass	74.3 kg/m
Neutral Axis to base	42.5 mm
Moment of Inertia	I <sub>xx</sub> 870 cm <sup>4</sup>   I <sub>yy</sub> 1342 cm <sup>4</sup>

Edition	A
Date	29/10/02
Scale	1:1 @ A4

FOR GUIDANCE ONLY  
 THIS INFORMATION HAS BEEN  
 PROVIDED IN GOOD FAITH BUT  
 SPECIFICATIONS DO CHANGE